



Retail &  
Commercial

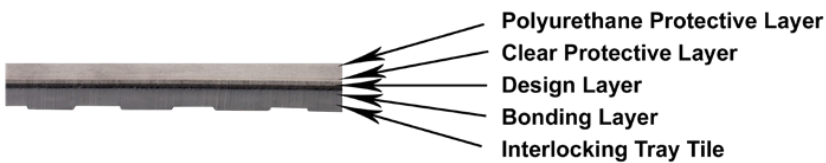
Design & Urban  
Collection





# Design Collection

Our Design Series use patented hidden interlock joints making these tiles look like real slate, tile marble or terrazzo. Ideal for residential use, retail stores, offices, lobbies, galleries, and more. Each tile is manufactured from five layers bonded under intense heat and pressure. Integral clear protective top layer protects surface from wear and allows for easy cleaning. Available in seven beautiful decorative finishes. Coordinated joint colors give the look of grout.



Wood Range



Light Oak



Vintage Maple



Vintage Ash



Dark Oak



Vintage Sand

Stone Range



Shalestone



Cream Terrazzo



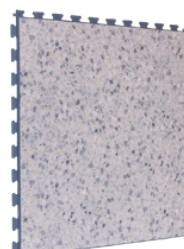
Limestone



Sandstone



Granite



Grey Terrazzo



Volcano



Polished Concrete



Clay



# Urban Collection

Urban Tile is a new robust interlocking loose lay floor system available in modern decor finishes.



Concrete Charcoal - 59233

## Dimensions

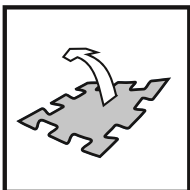
■ 22.8 inches x 22.8 inches   ■ 6.5mm Thickness   ■ PU with 0.7mm wear layer.





Concrete Brown - 59232

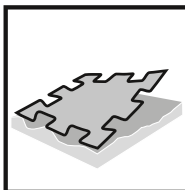
## Product Overview



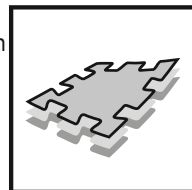
Loose lay -  
No adhesive  
required.



Robust interlock  
- Suitable for  
wheeled traffic  
up to 2,600lbs.



No subfloor  
preparation - Can  
be installed over  
existing floor  
coverings, also  
poor and uneven  
sub floor



High dimen-  
sional stability  
- Heterogeneous  
construction  
with glass fibre  
reinforcement.



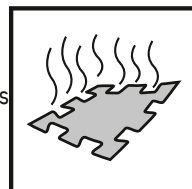
Improves acous-  
tic performance  
- Providing  
significant noise  
reduction.



No need to  
interrupt daily  
business activity  
- No loss of  
revenue.



Excellent anti  
fatigue properties  
- Comfortable to  
walk and stand  
on.



Low VOC  
emissions



The Urban Tile is a heterogeneous, 100% recycled PVC, heavy duty interlocking 6.5mm tile. This robust tile is suitable for heavy traffic areas. The commercial classification is 34 and Industrial 43. The Urban Tile is suitable for wheeled traffic up to 2,600 lbs and can be quickly installed over poor subfloors, making this tile the perfect flooring for renovation projects.



Concrete Grey - 59234





# Urban Tile Collection

The Urban Tile is available in 13 modern designs

## Concrete



Grey - 59234



Brown - 59232



Charcoal - 59233



Brown Polished - 4118

## Stone



Bronze - 40876



Shale - 46954



Clay - 40986

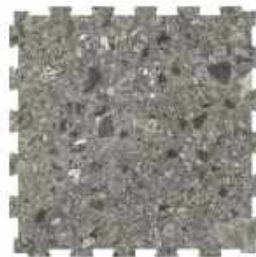
## Pebble



Brown Pebble - 46151



Grey Pebble - 46921

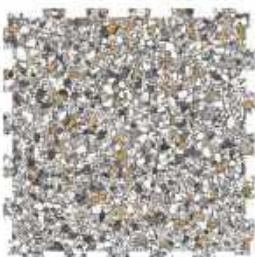


Dark Grey Pebble - 46961

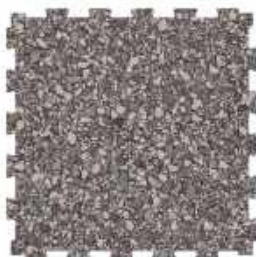
## Terrazo



Cream Terrazo - 46164



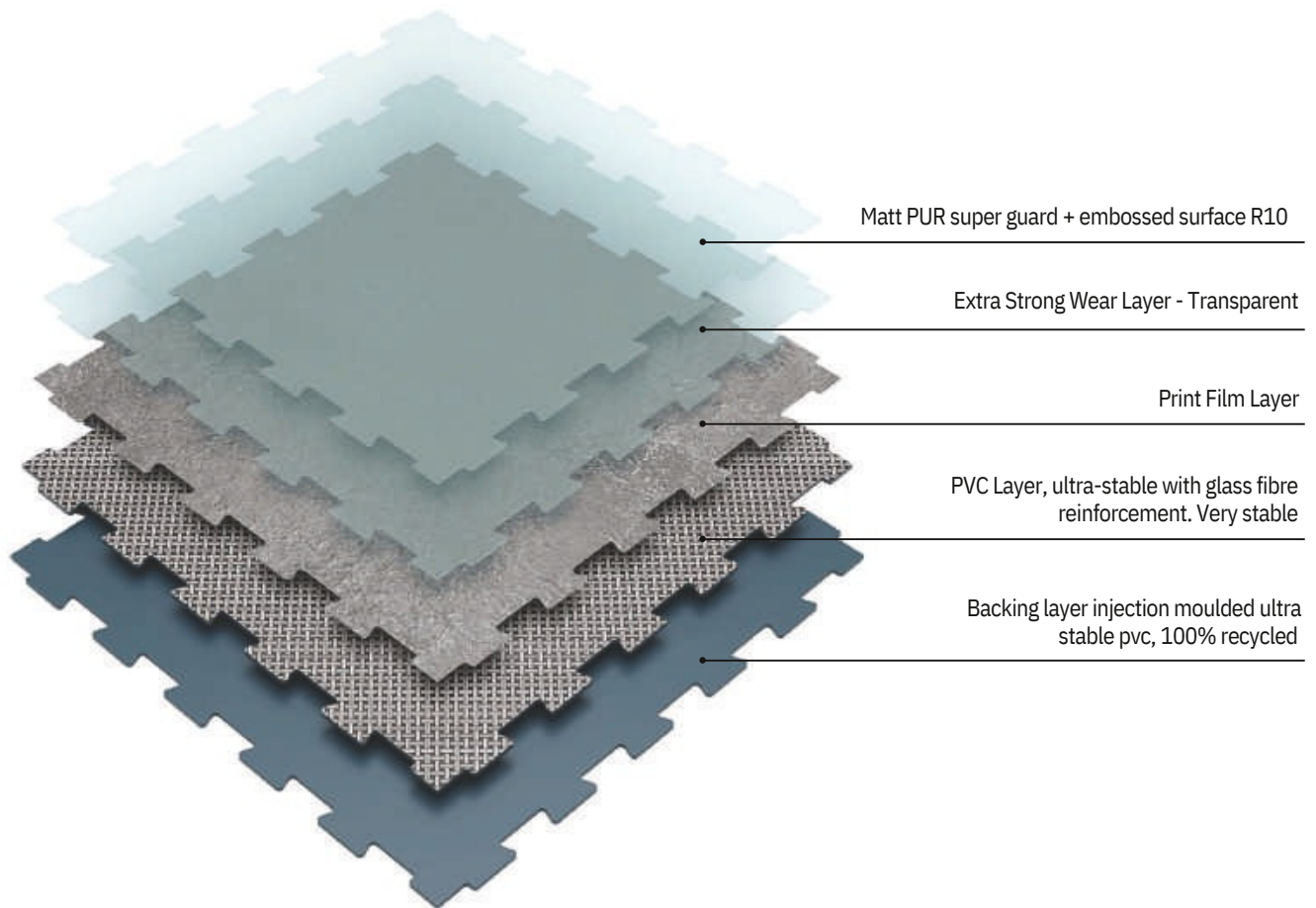
Brown Terrazo - 46921



Grey Terrazo - 46946



## Product Construction



Urban Tile is a multi-layered interlocking loose-lay vinyl tile with polyurethane treatment (PUR+), 6.5mm thick with a dovetail joint, abrasion group T. It is manufactured by R-Tek using a continuous patented high pressure process.

The Urban Tile wear layer is reinforced with oblong fillers that offer an outstanding resistance to traffic.

Urban Tile is reinforced with a ultra-stable glass fiber grid on an pressed homogeneous layer.

Urban Tile backing is an homogeneous component made from ultra-stable material using a high pressure process.

It is made of 100% controlled recycled materials.

It is 100% recyclable and made with up to 80% recycled content.

### Urban Tile

- Resistant to heavy traffic
- Fast renovation: can be installed over existing floor covering
- No subfloor preparation, no adhesive and no production stoppage (no loss or revenue)
- Polyurethane surface treatment PUR+ for ease of maintenance
- 13 designs available. Mix and match colours to create zoning.





Urban Collection

## Heavy Traffic Resistant

---

Dynamic Load: up to 2,600 lbs

Static Load: up to 50kg/cm<sup>2</sup>

## Installation on any type of surface

---



Resin



Concrete



Wet Surfaces  
up to 7% humidity / 92%RH



Tiles



Asbestos



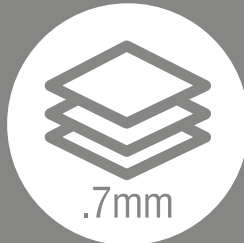
---

## Hard - Wearing

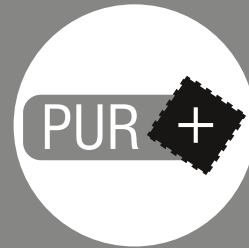
---



- Tiles are injection moulded and pressed.



- 0.7mm wear layer



- PUR + surface treatment enabling easy maintenance

## Comfort & Safety

---



- 12dB less noise than tiling when users walk on it.
- Underfoot comfort: reduces fatigue



- Higher slip-resistance than other types of surface (R10 rated)

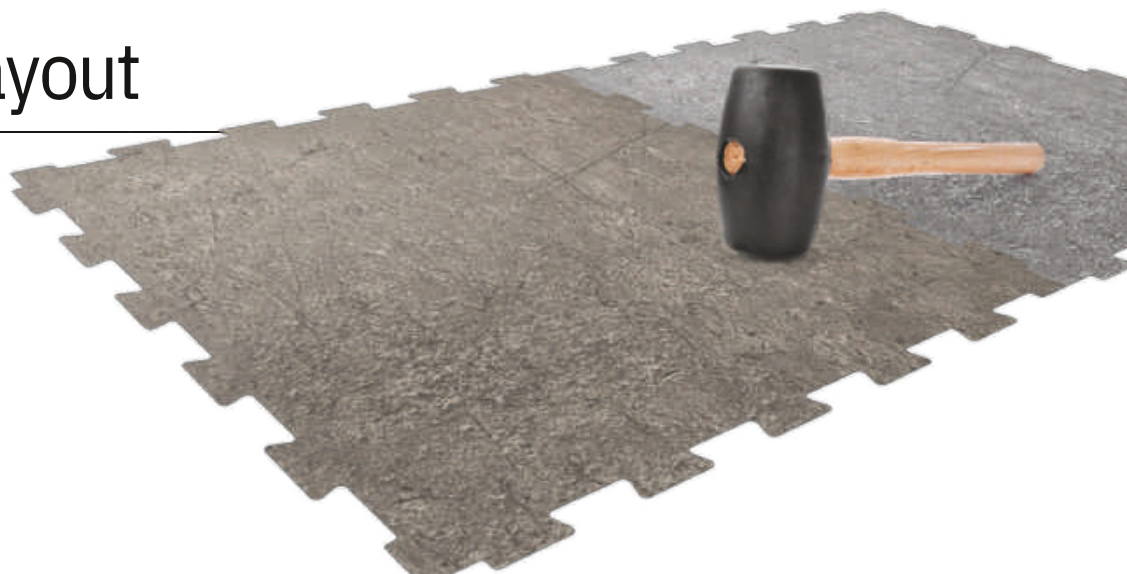


- Softer than ceramic tiles in the event of impact

## Designs & Layout

---

- Easy to install: modular tile format
- 13 finishes





# Sustainability

---



## COMPOSITION

---

- 100% REACH compliant
- FREE of Formaldehyde
- FREE of heavy metals
- FREE of solvent



## LIFE CYCLE ANALYSIS

---

- Eco-designed according to a product specific Life Cycle Analysis
- Product specific EPD (Environmental Products Declaration) available
- Manufactured in an ISO 14001 compliant site



## INDOOR AIR QUALITY

---

- TVOC emissions 10 times better than norm requirements (TVOC <100ug/m3 after 28 days)
- M1 certified
- Comply with AgBB protocol
- No formaldehyde emissions



## RECYCLED CONTENT

---

- 80% recycled content
- 100% REACH compliant recycled content



## RECYCLING

---

- 100% recyclable product



## INSTALLATION

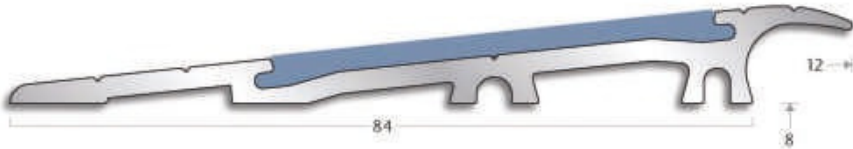
---

- Adhesive free installation



## Accessories

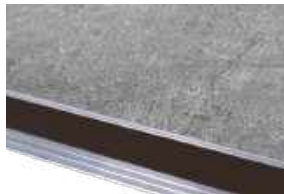
### Profile Edge



Grey



Black



Brown

The profiles are designed for use in the most demanding environments where frequent heavy foot and trolley traffic can be expected.

Manufactured using high quality aluminium to withstand repeated heavy traffic impacts. It provides a safe transition between wood, tiles and other resilient floor coverings.

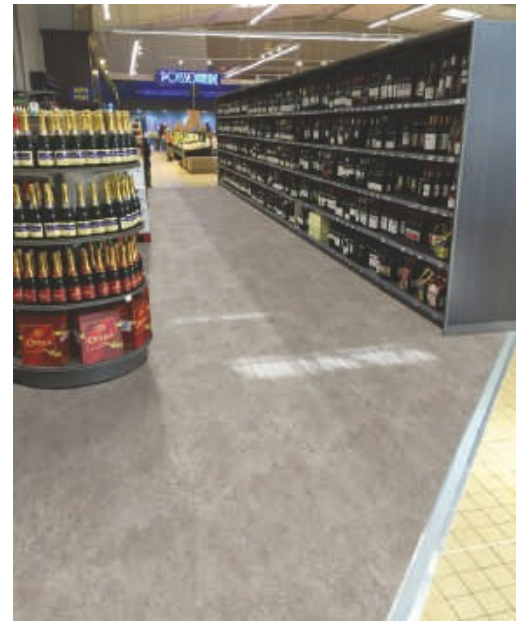
This profile incorporates a slip-resistant pvc insert available in 3 options: grey, black and brown.

#### SPECIFICATION

Type: Ramp Profile  
Environment: Interior  
Material: Aluminium/pvc  
Width: 84mm  
Gauge: 8mm  
Used with: Wood, ceramic tiles  
Length: 2.50m

#### INSERT OPTIONS

Interior: ELINS50 (25m coil)



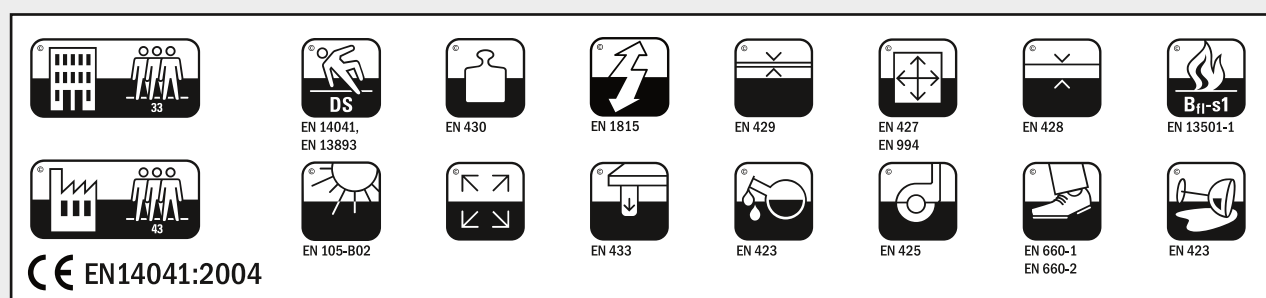
### Mat Entrance

- Same thickness as Urban Tiles
- Full kit ready-to-lay including the mat, frame sections and fastenings
- Withstands intensive footfall
- Surface not damaged (no adhesives or screws)
- Full 100% looselay system



# Technical Specification

TECHNICAL SPECIFICATION	NORM	URBAN TILE
Classification	ISO 20582	34/43
Tile Dimensions	ISO 24342	22.8 in x 22.8 in
Packaging	3 Tiles	1m2/Box
Thickness	EN ISO 24342	6.5mm
Wear Layer	EN ISO 24342	0.7mm
Weight	EN ISO 24342	9.6kg/m2
Abrasion	EN 660.2	T
Fire Class	EN 13501.1	Bfl-s1
Indentation	ISO 24342	<0.10mm
Acoustic	ISO 717.2	12 db
Caster Wheel	EN 425	No Damage
Dimensional Stability	ISO 23999	0.15%
Anti-slip (coefficient)	BS EN 13893	>.30
Anti-slip	BS EN 51130	R10
Thermal Resistance	ISO 8302	+/- 0.013m2 K/W
Anti-Static	BS EN 1815	Rubber Sole: -1.0kV PVC Sole: -1.7kV
Chemical Resistance	BS EN 423	Good



## Recyclable

BRE-Green Guide Ratings A+







ArmorGarage Inc  
Miami, Florida

T: 1-866-532-3979

F: 1-386-917-1938

E: [info@armorgarage.com](mailto:info@armorgarage.com)

W: [www.armorgarage.com](http://www.armorgarage.com)

